



# GMT MONTHLY MEMBERSHIP PROGRESS REPORT

Results as of: 5/31/2020

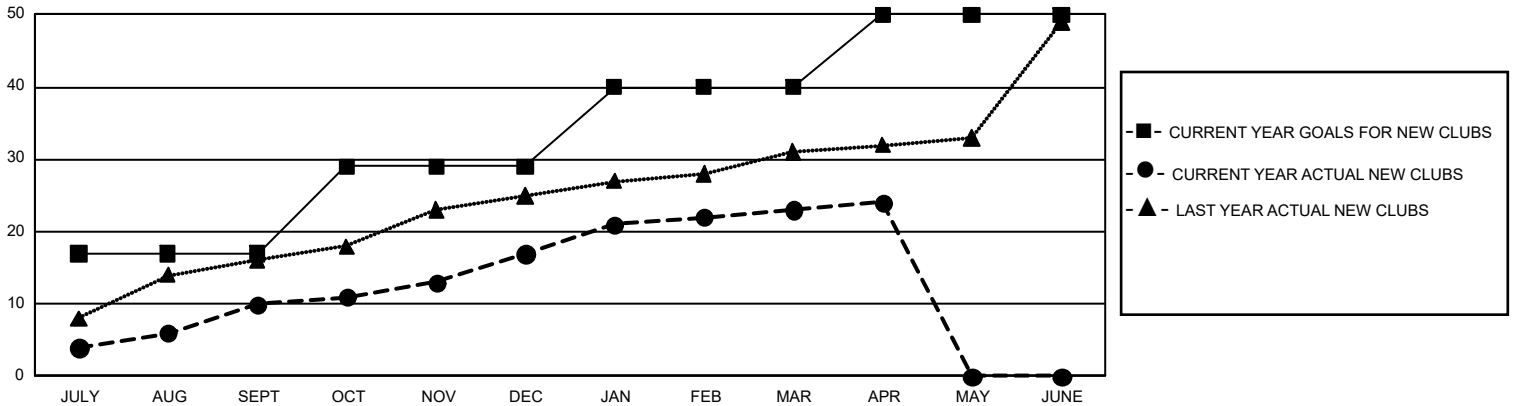
## GMT Constitutional Area 6, Group H

GMT: OPEN

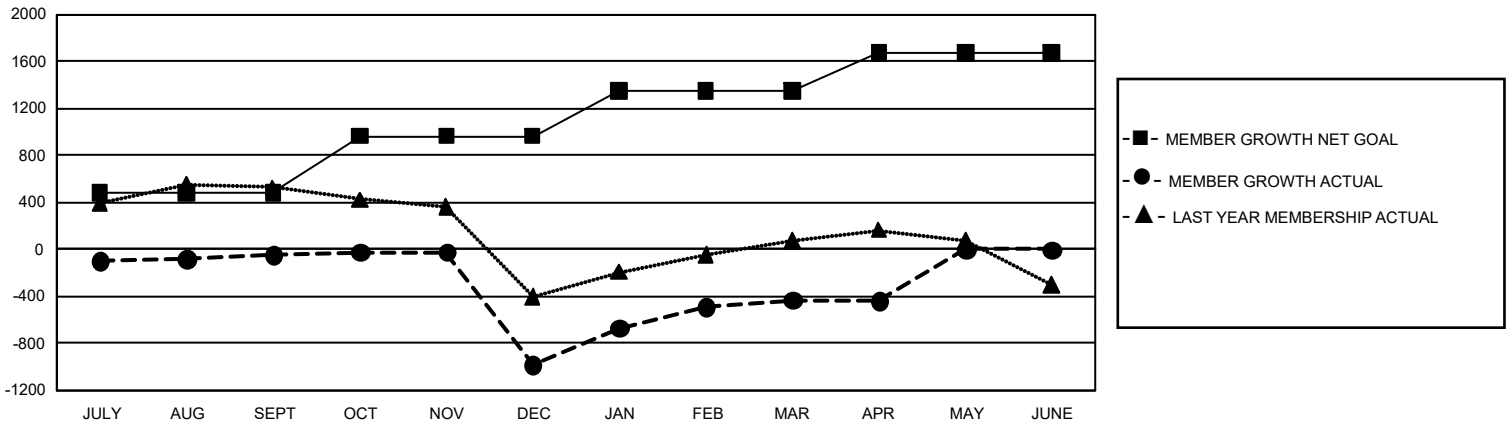
REPORT DOES NOT INCLUDE CLUBS IN UNDISTRICTED AREAS.

Clubs				Members			
RESULTS FOR 2019-2020				RESULTS FOR 2019-2020			
QUARTER	NEW CLUB GOAL	NEW CLUBS	DROPPED CLUBS	QUARTER	MEMBER GROWTH NET GOAL	MEMBER GROWTH ACTUAL	DROPPED MEMBERS ACTUAL (including transfers)
JULY/AUG/SEPT	51	10	4	JULY/AUG/SEPT	1,455	713	690
OCT/NOV/DEC	36	7	30	OCT/NOV/DEC	1,440	451	1,374
JAN/FEB/MAR	33	6	1	JAN/FEB/MAR	1,155	978	294
APR/MAY/JUNE	30	1	0	APR/MAY/JUNE	975	98	102

**GOALS AND ACTUAL NEW CLUBS CUMULATIVE**



**GOALS AND ACTUAL MEMBERS CUMULATIVE**



DROPPED CLUBS: 35	371 CLUBS OF 687 ADDED 1 OR MORE NEW MEMBERS	<b>GENDER DISTRIBUTION</b> MALE            19,184 (81.34%) FEMALE         4,402 (18.66%)
<b>DROPPED MEMBERS</b> DECEASED            80 CLUB CANCELLED      699 OTHER                 1,681 <hr/> <b>TOTAL</b> 2,460	<a href="#">CLICK HERE FOR CUMULATIVE MEMBERSHIP DATA</a>	TOTAL FAMILY UNIT MEMBERS            7,875 FAMILY MEMBERS PAYING HALF DUES      4,135